

91166



NEW ZEALAND QUALIFICATIONS AUTHORITY  
MANA TOHU MĀTAURANGA O AOTEAROA

QUALIFY FOR THE FUTURE WORLD  
KIA NOHO TAKATŪ KI TŌ ĀMUA AO!

2

SUPERVISOR'S USE ONLY

## Level 2 Chemistry, 2019

### 91166 Demonstrate understanding of chemical reactivity

2.00 p.m. Monday 11 November 2019  
Credits: Four

Achievement	Achievement with Merit	Achievement with Excellence
Demonstrate understanding of chemical reactivity.	Demonstrate in-depth understanding of chemical reactivity.	Demonstrate comprehensive understanding of chemical reactivity.

Check that the National Student Number (NSN) on your admission slip is the same as the number at the top of this page.

**You should attempt ALL the questions in this booklet.**

A periodic table is provided in the Resource Booklet L2-CHEMR.

If you need more room for any answer, use the extra space provided at the back of this booklet and clearly number the question.

Check that this booklet has pages 2–11 in the correct order and that none of these pages is blank.

**YOU MUST HAND THIS BOOKLET TO THE SUPERVISOR AT THE END OF THE EXAMINATION.**

TOTAL

ASSESSOR'S USE ONLY

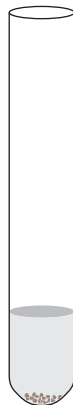
## QUESTION ONE

The same volume and concentration of hydrochloric acid,  $\text{HCl}(aq)$ , was added to each of three test tubes. Metal samples were added, according to the table and diagram below.

**Test tube 1**  
zinc and acid



**Test tube 2**  
copper and acid



**Test tube 3**  
zinc, copper and acid



Test tube	Contents	Observations
1	20 mL hydrochloric acid, $\text{HCl}(aq)$ , and 1 g zinc granules, $\text{Zn}(s)$	slow rate of bubbles
2	20 mL hydrochloric acid, $\text{HCl}(aq)$ , and 1 g copper granules, $\text{Cu}(s)$	no observable reaction
3	20 mL hydrochloric acid, $\text{HCl}(aq)$ , 1 g zinc granules, $\text{Zn}(s)$ , and 1 g copper granules, $\text{Cu}(s)$	fast rate of bubbles

(a) (i) Identify the role of the copper granules,  $\text{Cu}(s)$ , in test tube 3.

---

(ii) Explain the role of copper,  $\text{Cu}(s)$ , in this reaction.

You should refer to activation energy and collision theory in your answer.

---



---



---

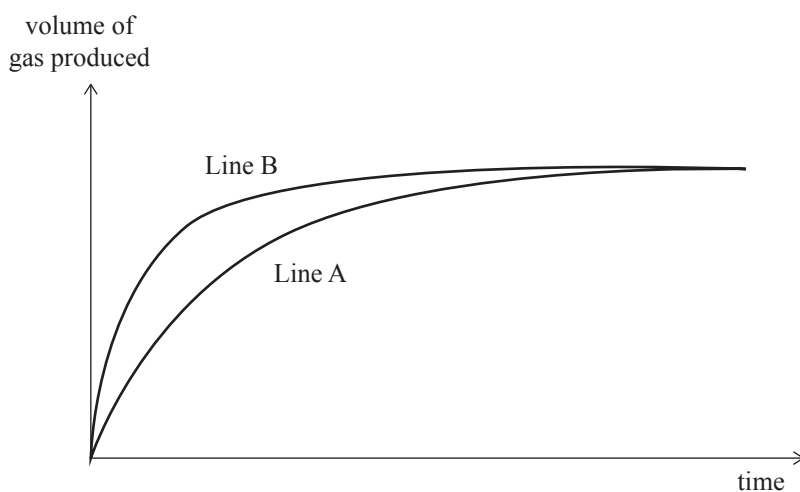


---



---

- (b) In a second investigation, two 20 mL samples of  $0.2 \text{ mol L}^{-1}$  sulfuric acid,  $\text{H}_2\text{SO}_4(\text{aq})$ , were placed in separate conical flasks. One of the flasks was placed in a water bath at  $40^\circ\text{C}$  and the other was placed in a water bath at  $20^\circ\text{C}$ . To each conical flask, 5.0 g of zinc granules,  $\text{Zn}(\text{s})$ , were added. The gas produced was collected and measured over time and the following graph was produced.



- (i) Identify which line on the graph represents the reaction at  $40^\circ\text{C}$ , and explain why the two lines still finish in the same position.

---



---



---



---

- (ii) Elaborate on the effect of increasing temperature on the rate of reaction. Refer to collision theory and activation energy in your answer.

---



---



---



---



---



---



---



---



---



---



---



---

**QUESTION TWO**

The Haber process combines nitrogen,  $\text{N}_2(\text{g})$ , from the air with hydrogen,  $\text{H}_2(\text{g})$ , to form ammonia,  $\text{NH}_3(\text{g})$ , which is then used in the manufacture of fertiliser.

The equation for this process is  $\text{N}_2(\text{g}) + 3\text{H}_2(\text{g}) \rightleftharpoons 2\text{NH}_3(\text{g})$

- (a) (i) Write the equilibrium constant expression for this reaction.

$K_c =$
---------

- (ii) Using equilibrium principles, explain why carrying out the Haber process at high pressure is an advantage to the manufacturer.

---

---

---

---

---

---

---

---

---

---

- (iii) In another part of the process, the ammonia,  $\text{NH}_3(\text{g})$ , is removed as it is produced.

Justify this step using equilibrium principles to explain why this would be an advantage to a manufacturer.

---

---

---

---

---

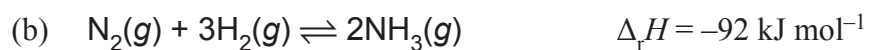
---

---

---

---

---



Explain, using equilibrium principles, whether the value of  $K_c$  would increase or decrease if the temperature of the reaction is increased.

---

---

---

---

---

---

---

---

---

---

---

---

---

---

---

---

---

---

---

---

---

---

---

---

- (c) (i) Nitrogen,  $\text{N}_2(\text{g})$ , can also be reacted with oxygen,  $\text{O}_2(\text{g})$ , to give nitrogen dioxide,  $\text{NO}_2(\text{g})$ , and the following  $K_c$  expression would apply.

$$K_c = \frac{[\text{NO}_2]^2}{[\text{N}_2][\text{O}_2]^2}$$

The  $K_c$  for the reaction at  $25^\circ\text{C}$  is  $8.30 \times 10^{-10}$ .

Calculate the concentration of nitrogen dioxide,  $\text{NO}_2$ , if the concentration of oxygen,  $\text{O}_2$ , is  $0.230 \text{ mol L}^{-1}$  and the concentration of nitrogen,  $\text{N}_2$ , is  $0.110 \text{ mol L}^{-1}$ .

Give your answer to appropriate significant figures.

---

---

---

---

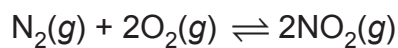
---

---

---

---

- (ii) Explain the effect on  $K_c$  if the concentration of nitrogen,  $\text{N}_2(\text{g})$ , is increased to  $0.200 \text{ mol L}^{-1}$  at  $25^\circ\text{C}$  (no calculations are necessary).



---

---

---

---

---

---

---

---

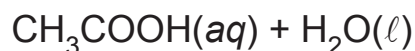
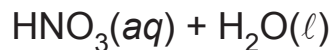
---

---

**QUESTION THREE**

(a) Nitric acid,  $\text{HNO}_3(aq)$ , and ethanoic acid,  $\text{CH}_3\text{COOH}(aq)$ , are both acids.

(i) Write equations to show their reactions with water,  $\text{H}_2\text{O}(\ell)$ .



(ii) Use these equations to explain why they are classified as acids.

---

---

---

---

(b) (i) A solution of hydrochloric acid,  $\text{HCl}(aq)$ , has a hydronium ion concentration,  $[\text{H}_3\text{O}^+]$ , of  $0.0164 \text{ mol L}^{-1}$ .

Calculate the pH and hydroxide ion concentration,  $[\text{OH}^-]$ , of the solution.

pH: \_\_\_\_\_

---

---

$[\text{OH}^-]$ : \_\_\_\_\_

---

---

(ii) Calculate the hydroxide ion concentration,  $[\text{OH}^-]$ , of a solution of potassium hydroxide,  $\text{KOH}(aq)$ , with a pH of 9.4.

---

---

---

---





(iii) Elaborate on the electrical conductivity of the four solutions.

---

---

---

---

---

---

---

---

---

---

---

---

---

---

---

---

---

---

---

---

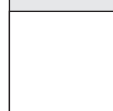
---

---

---

---

ASSESSOR'S  
USE ONLY



Extra paper if required.  
Write the question number(s) if applicable.

QUESTION  
NUMBER

Lined area for writing the question number(s) if applicable.

ASSESSOR'S  
USE ONLY

**Extra paper if required.  
Write the question number(s) if applicable.**

QUESTION  
NUMBER

91166